



Alfred E. Rush Academy

GRADES
7-12

ENROLLMENT
110

CLASS SIZE
15
AVERAGE

STUDENT TO
TEACHER
RATIO
15:1

PRINCIPAL
**Christopher
Coleman**

1201 E Ashby Rd
Quinby SC 29506
843-664-4156 O
843-629-3296 F

BELIEF **Diligence and Perseverance**

f1s.org/alfrederush

NOTEWORTHY

Our Mission

To cultivate the will to work, the character to hope, and the endurance to finish.

Our Graduates

We celebrated 21 high school graduates in 2018-19 who earned a collective 373 credits.

Our Goals for Our Students

- Persist Through Every Endeavor
- Manage Impulsivity
- Respect School, Each Other & Property
- Work Diligently on All Assignments
- Exercise Etiquette at All Times
- Accept Consequences for Their Actions
- Do Their Best to Serve as Role Models For Others
- Maintain an Inviting School Atmosphere

ACADEMIC EXCELLENCE

Learning Environment

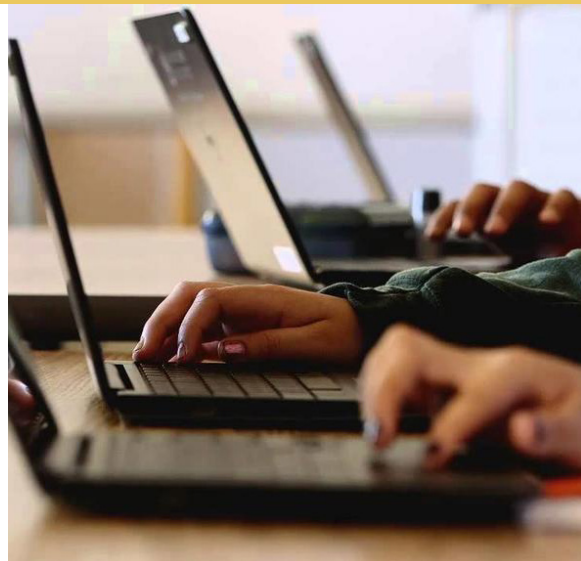
- Small, blended learning environment
- Students work at their own pace
- Opportunities to catch up for those who fall behind
- Flexible attendance hours

Electives

- Fundamentals of Computing, Fundamentals of Website Design, Physical Education 1 & 2

Faculty & Staff

We are a committed team of 14 Certified Teachers; 40% hold advanced degrees



MASCOT **Phoenix**

COLORS



FOUNDED **2012**

COMMUNICATIONS & COMMUNITY INVOLVEMENT

Communications

Clear, concise, and consistent communication is our goal. We share information through the USPS, phone calls, emails, and social media. We also utilize Blackboard text messaging and encourage families to use the F1S app.

Community Involvement

We're fortunate to work with our community to offer a Flex-Day Friday program where business owners, retired teachers, coaches, pastors, and other pillars of the community visit to share inspirational stories and messages with our students.

SAFETY

The safety of our students is a top priority. The doors to our School remain locked at all times, and we utilize an automated check-in system for visitors. Students are searched daily before entering the School.

